

**Subject:** Instant HR/Payroll: Employee Learning Week, Usborne Book Fair at the CDC, Leading to Well-Being Conference Registration Open, Faculty/Staff Discount at the Rathskeller and Unum Open Enrollment

**Date:** Wednesday, November 25, 2015 at 9:54:50 AM Eastern Standard Time

**From:** Janet P Walker (sent by HR/Payroll Department Contacts <DEPARTMENT-CONTACTS-L@listserv.gmu.edu>)

**To:** DEPARTMENT-CONTACTS-L@listserv.gmu.edu



**Celebrate Employee Learning Week! December 7 – 11**

Employee Learning Week (ELW) is an awareness campaign that highlights the important connection between learning and achieving organizational results. To participate in ELW, create an account at <http://lynda.gmu.edu> and choose an online training video that applies to your job. View the video and submit your answers to the questions below to [hlearn@gmu.edu](mailto:hlearn@gmu.edu) by 5:00 on Friday, December 11. Your submission will be entered into a drawing for fabulous prizes. For more information on ELW, please visit <http://www.employeelearningweek.org>.

1. What was the name of the online class and the trainer?
2. What was one new thing you learned?
3. How will you apply what you learned to your job?



**Usborne Book Fair at the Child Development Center (CDC): December 8-11**

Shop for the young ones in your life (or the young at heart!). Usborne Books will be visiting the CDC from December 8-11. They accept all major credit cards and cash. The book fair earns free books (50% of retail sales) for the CDC! Usborne will be on-site from 4-6 pm on December 8-10 and 3:30-5 pm on December 11. They will leave order forms so parents can shop during the day and leave the payment with CDC staff (Karen Prodo).

The link for the online portion of the book fair it is open now until December 11 at <https://h1208.myubam.com/188074>.



**From Our Colleagues at the Center for the Advancement of Well-Being: Registration Now Open! Leading to Well-**

## Being Conference 2016

When/Where: April 14-15, 2016, Fairview Park Marriott, Falls Church, VA

Registration is now open for the 2016 Leading to Well-Being: Cultivating Resilience Conference co-sponsored by MasonLeads & the Center for the Advancement of Well-Being. This year's keynote speakers are Dr. Dan Siegel, Dr. David Cooperrider & Dr. Annie McKee.

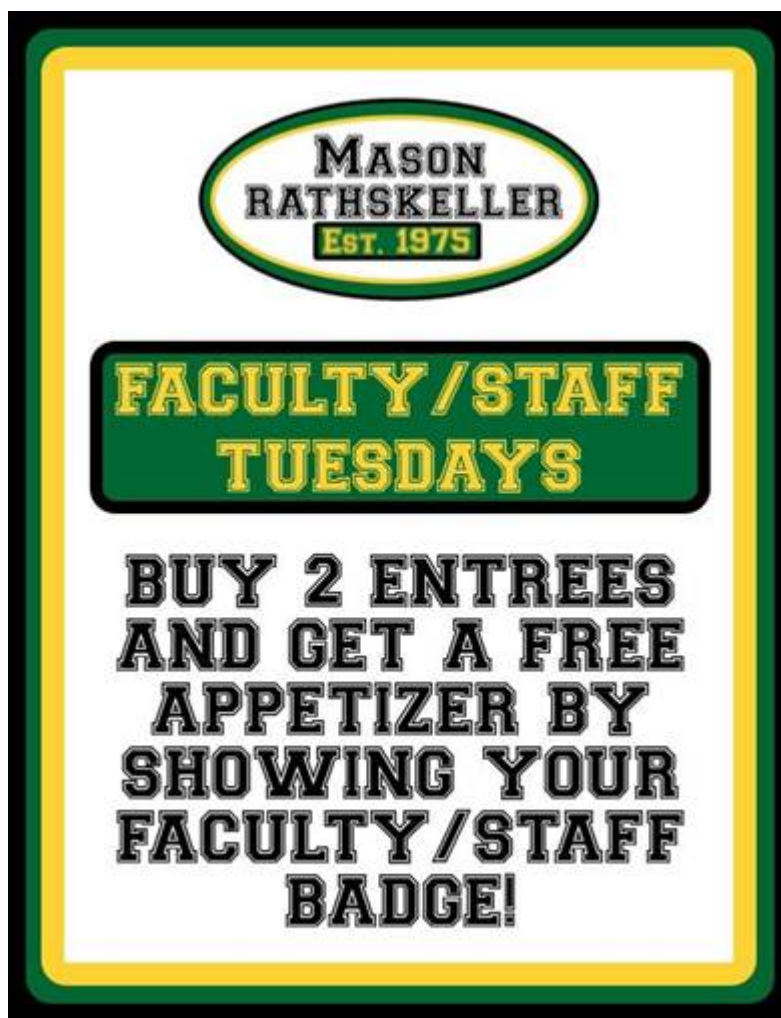
Optional Thursday Pre-Conference Intensives include:

- The HeartMath Institute
- David L. Cooperrider/Appreciative Inquiry
- The Strozzi Institute
- The Chopra Center

There are a limited number of discounted Mason employee tickets available. Space for optional Thursday Intensives limited! Mason faculty and staff who register by 12/4 get an extra \$25 off the Friday Conference ticket.

For details and to register, please visit [wellbeing.onmason.com](http://wellbeing.onmason.com)

**Faculty/Staff Discount at the Rathskeller: Check This One Out**



### Reminder: UNUM Long Term Disability Open Enrollment Underway

If you are a non-VSDP employee who is not yet participating in UNUM or a current participant who wants to change the amount of your coverage, open enrollment runs through November 30. Long-term disability insurance is designed to protect your income should you become medically unable to work. Additional information is available on the benefits website at <http://hr.gmu.edu/benefits>.



Have a peaceful and joyous Thanksgiving break.