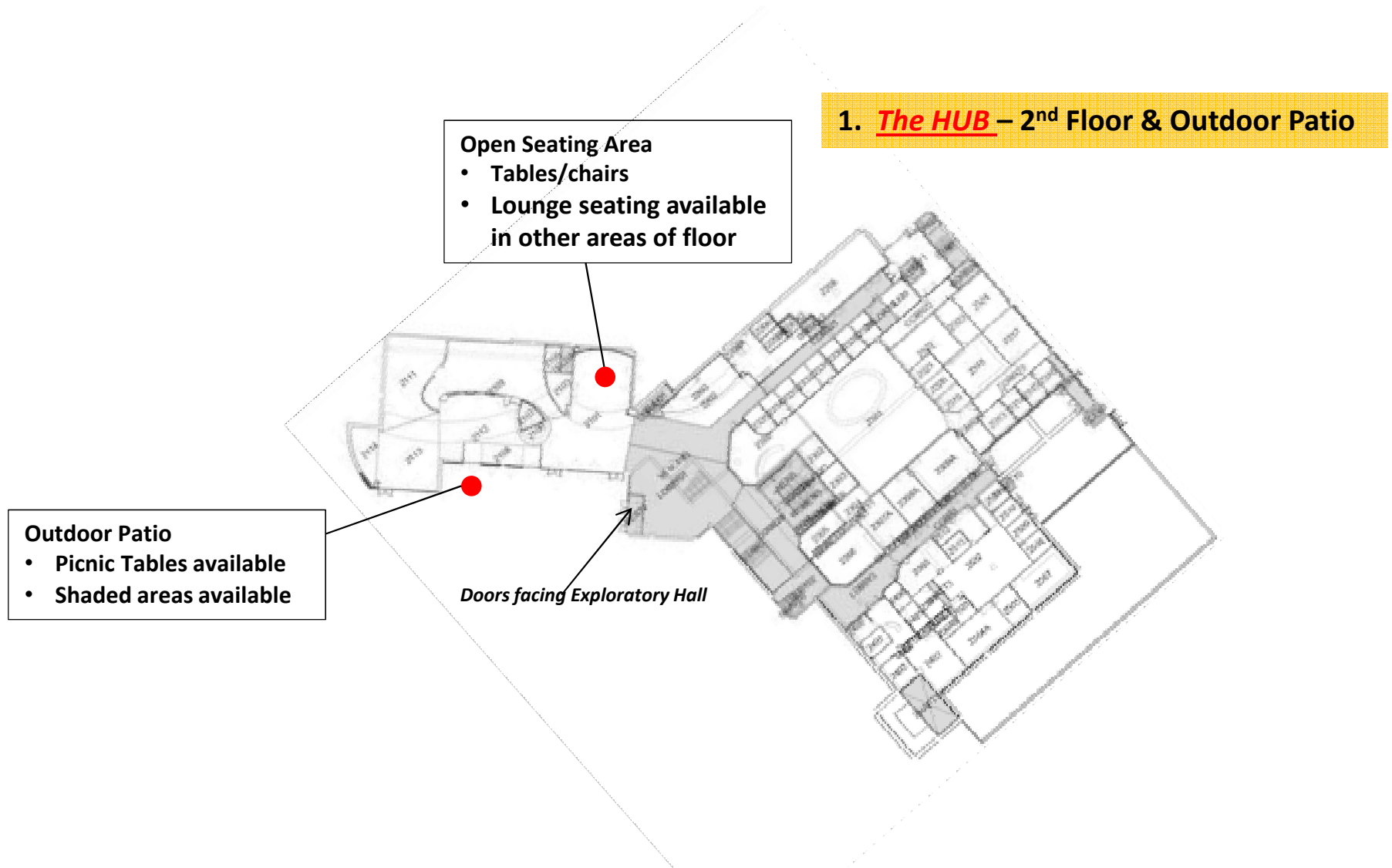


Available “Recharge” Spaces at Fairfax Campus

When considering a spot to get away from the office and have lunch, most Faculty and Staff at Fairfax Campus tend to gravitate towards the Johnson Center. However, seating options in JC may be limited during peak lunch hour times. Take advantage of the alternate spaces listed in these slides – both indoor and outdoor - to “recharge” during the day. Grab your lunch and some coworkers and explore the campus!



Available "Recharge" Spaces at Fairfax Campus

2. Merten Hall – 1st Floor lobby & Outdoor Patio



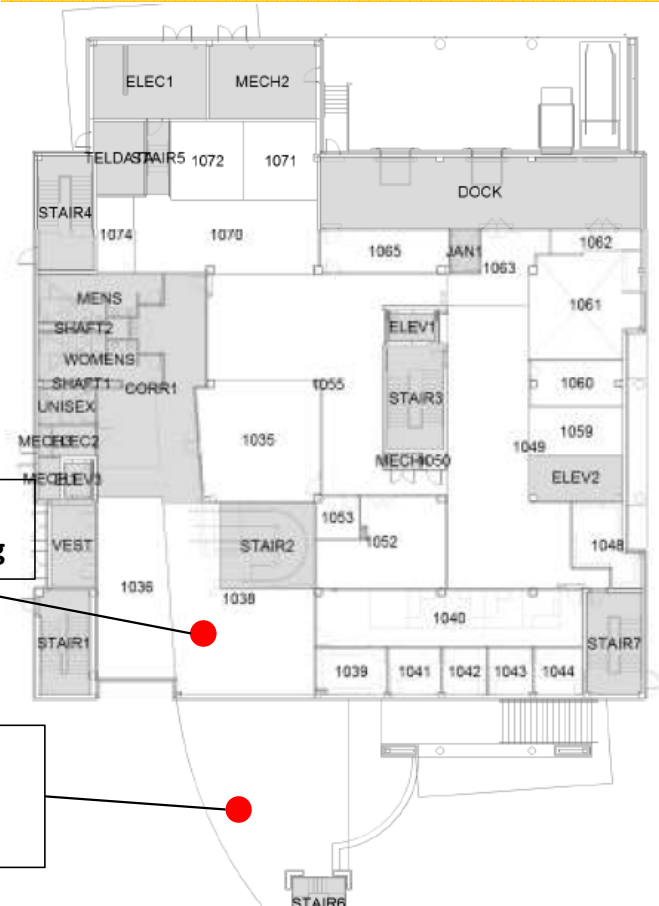
Outdoor Patio
• Picnic Tables available

Open Seating Area
• Tables/chairs, lounge seating

Open Seating Area
• Tables/chairs, lounge seating

Outdoor Patio
• Picnic Tables available
• Shaded area available

3. Southside – 1st Floor & Outdoor Patio

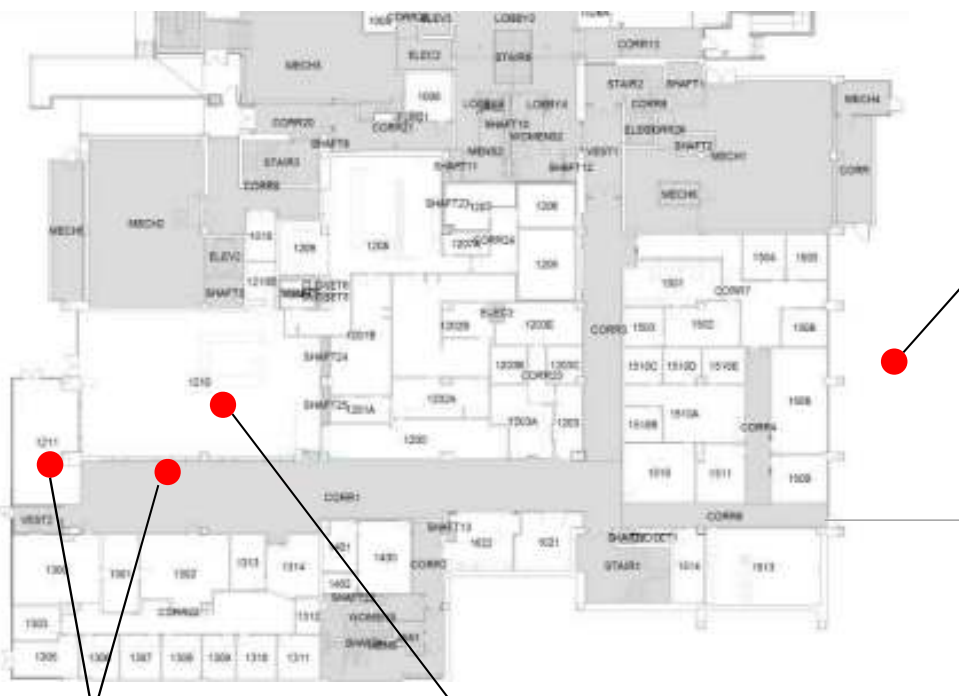


Open Seating Area
• Tables/chairs, lounge seating

Outdoor Patio
• Picnic Tables available
• Shaded area available

Available "Recharge" Spaces at Fairfax Campus

4. Student Union I – 1st Floor, Outdoor Patio



Outdoor Patio

- Picnic Tables available
- Shaded areas available

Open Seating Area

- Tables/chairs

Ratskeller Dining Venue

- Ratskeller allows non-purchased lunches to be brought into the venue

Open Seating Area (Patriots Lounge)

- Lounge seating

5. Student Union I – 2nd Floor



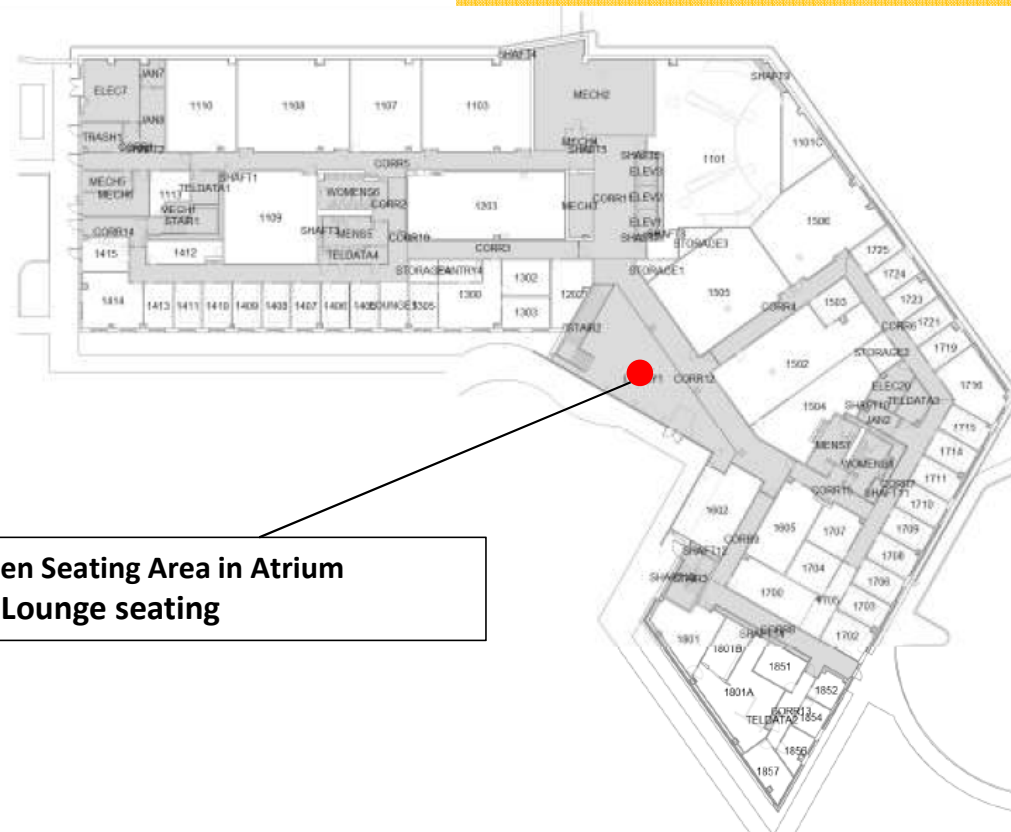
Available "Recharge" Spaces at Fairfax Campus

6. Exploratory Hall – 1st Floor



Open Seating Area in Atriums
• Tables/Chairs

7. Long and Kimmy Nguyen Engineering Building – 1st Floor



Open Seating Area in Atrium
• Lounge seating

Additional Outdoor “Recharge” Seating Spaces at Fairfax Campus

There are numerous outdoor tables/benches around campus, so take a break from your work day and get some fresh air. Here are a few options to consider:

- Benches around Mason Pond**
- Benches in the Arts Quad between Mason Hall and Center for the Arts**
- Benches along the Quad between Student Union I and Fenwick Library**
- Benches along the JC Plaza between the Clock and George Mason statue**
- Tables in front of Aquatic and Fitness Center**
- Picnic tables outside of Enterprise Hall (facing Research Hall)**
- Tables outside Northern Neck (Starbucks Plaza area)**
- Picnic tables in the area between Krug Hall and Finley Building**